

## OverTime for HP OpenView

OverTime takes selected devices from your HP OpenView map, starts HP OpenView collecting SNMP statistics on these devices all from a single menu item from within HP OpenView. These statistics are then translated into graphs on HTML pages available for you to review with your browser. See all your network statistics OverTime.

## What does OverTime do?

OverTime works in 3 different ways.

1) OverTime queries the selected devices to see what Input/Output interfaces they have and sets up a Round Robin Database (RRD) based on the information gathered. The RRD does not grow in size once setup. OverTime configures HP OpenView to perform all the necessary SNMP data collections for it. A master HTML page with the new devices is created. When you want to see a graph of the information collected, you simply select the device from the master HTML page and OverTime graphs the collected data. An HTML page showing the most recent and detailed graphs for each interface on the device is displayed, along with I/O Errors and CPU utilisation for supported devices. The graphs are links to more detailed views of the particular instance with four graphs being generated that show the information over progressively longer periods. Typically, the top graph spans just more than a day while the last graph spans a year including maximums, averages and minimums.

2) For complete flexibility, you can also start HP OpenView collecting any numeric SNMP data from the "Data Collections & Thresholds" menu for any system. Once this is done, select that system from the map (as before) and run the OverTime Add/Update menu item. OverTime follows the same process as before except that the data sources are those already selected. This flexibility allows OverTime to record UPS Temperature and Humidity, Mail Queues from an e-mail system and disk space usage from servers. Labels for titles, legends and y-axis are automatically generated, but are modifiable by the user.

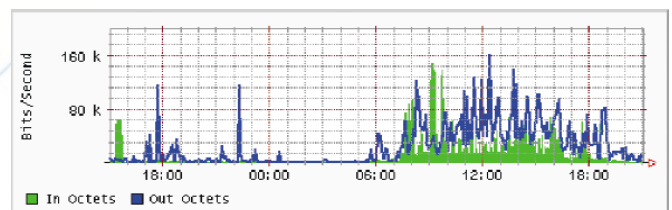
3) See PingTime.

Monitoring of device/s by OverTime can be stopped by selecting the device/s and running the "Stop Collecting Target/s" menu item.

When you want to see what devices are being monitored by OverTime select the "Show Current Target/s" menu item. OverTime will then select the devices in HP OpenView, opening additional submaps if needed.

RRD updates can be run on all devices on a regular basis with OverTime's database update tool. This keeps the timing for dynamic updates to a minimum and can be run out-of-hours when system load is not crucial.

OverTime's HP OpenView SNMP database file trim utility allows all the HP OpenView collected data to be trimmed, keeping just the last 'N' days of data. This utility, run on a regular basis, alleviates the headaches of growing disk space requirements versus the need to keep current information.





## PingTime

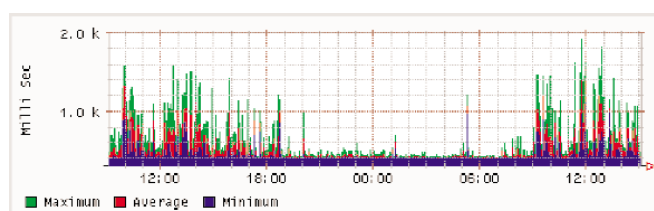
PingTime uses a Cisco Router to record ping Round Trip Times from the router to any IP address. The minimum, average and maximum response time are measured over several pings by the router and the results recorded.

## What does PingTime do?

PingTime works in 2 different ways.

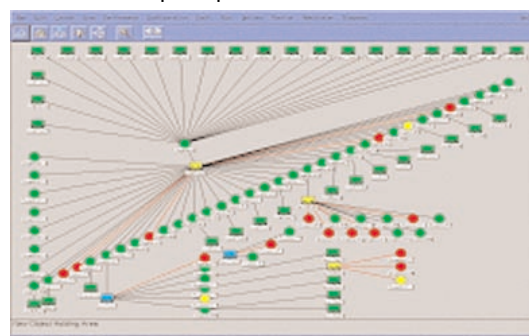
1) PingTime's WEB based diagnostic interface allows you to specify a Cisco Router to act as the test source and one or more IP addresses to be tested. The results of the testing are displayed on an HTML page. This is a very quick and convenient way of testing response times from one remote location to another without having to telnet into the router. Indeed, the user does not even need access to the router to perform the tests.

2) PingTime can be used as an additional source for OverTime. The same pages that OverTime produces can also include PingTime results. PingTime sets up the necessary polling and recording of the round trip response times from the specified router and shows the results as a stacked graph like the example on this page.



## LineUp for HP OpenView

LineUp moves selected symbols on the HP OpenView submap and evenly spreads them either on an axis or a vector joining the extreme symbols. The resulting maps are pleasing to the eye and make laying out maps more attractive and easier to use.



## How easy is LineUp to use?

LineUp is very simple, easy and intuitive to use. Simply select the symbols you would like in a straight line and then click on the View menu and either "Align Symbols on axis" or "Align symbols end-to-end". That's all!!

"Align symbols on axis" moves two or more selected symbols to their most natural axis. If the selected symbols are spread roughly along a horizontal line, then LineUp moves them to be evenly spread along that line through the symbols. If the symbols are spread roughly along a vertical line then it is to this line the symbols are moved.

"Align symbols end-to-end" moves three or more selected symbols to be evenly spread along a vector that joins the most extreme symbols.

## System Requirements:

OverTime, PingTime & LineUp run with HP OpenView 5.x and 6.x on Windows NT 4.0, Windows 2000, Solaris 2.6+, HP-UX 10.20 and 11. A web server on the same machine is convenient, but not necessary. OverTime can be easily setup to act as another report for Report Presenter.

## Support and further details: